

Tamagotchi Pix Party



6+



#42900
#42910



BANDAI S.A.S.
15 Rue Felix Mangini
69009 Lyon, France



© & © 2022 BANDAI

CONTENTS

THE PRODUCT	03
THE BIRTH OF TAMAGOTCHI CHARACTER!	03
ATTRIBUTE QUIZ	03
ENTERING LETTERS	04
TAMAGOTCHI CHARACTER'S GROWTH	04
THE SCREEN	04
CARING FOR YOUR TAMAGOTCHI CHARACTER	04
STATUS	05
FEED	05
PARTY	06
BATHROOM	07
BEDTIME AND DREAMS	07
ITEM BOX	07
GO OUT	08
CAMERA	09
PHONE	10
CONNECT	11
MEDICINE	13
NOTEBOOK	13
PETTING MODE	14
GARDEN	14
CHARACTER ROOM	14
SAYING GOODBYE	15
SETTINGS	15
REMARKS ABOUT CONNECTING WITH TAMAGOTCHI PIX	15
REPLACING BATTERIES	15
TROUBLESHOOTING	16
RESET BUTTON	16
PERSONAL DATA	16

CAUTION!

- Please do not use this product if you have a pacemaker as it contains electronic components, speakers, magnets etc.
- Misuse of batteries could result in heating, rupture, combustion, or leakage.
- If you use rechargeable batteries please use only the appropriate nickel-hydrogen rechargeable batteries, and be sure to observe the recharger instructions regarding how to recharge.
- Stop use if the product or the battery becomes wet. This may cause a short-circuit.
- Do not place in water or fire, disassemble, or solder.
- Should liquid leaking from a battery come in contact with the eye, rinse immediately with a large amount of water and consult a physician. Should the liquid come in contact with the skin or clothing, wash with water.
- The batteries should be replaced by an adult.
- WARNING! Not suitable for children under 3 years. Small parts. Choking hazard. Colours, contents and decoration of contents may vary. Not all products may be available in your country. Retain packaging and instruction as it contains important information. Non-rechargeable batteries are not to be recharged. Rechargeable batteries are to be removed from the toy before being charged. Rechargeable batteries are only to be used under adult supervision. Different types of batteries or new and used batteries are not to be mixed. Only batteries of a recommended type or similar type shall be used. Batteries are to be inserted with the correct polarity. Exhausted batteries are to be removed from the toy. The supply terminals are not to be short-circuited. Supervise children if they are replacing batteries themselves to ensure these guidelines are followed. Store unused batteries in their packaging and away from metal objects which can cause a short-circuit. Caution: Keep batteries away from children. Batteries may be harmful if swallowed. Manufactured in China. Distributed by: Bandai UK Ltd, 37-39 Kew Foot Road, Richmond, TW9 2SS, UK. For further information email: support@bandaistore.co.uk or online at www.bandai.co.uk

PRECAUTION FOR USE

- No guarantees are provided regarding lost data.
- This product is composed of precise electronic parts. Do not drop, get wet, soil, or disassemble. Avoid use or storage in high or low temperatures.
- Battery life time will vary depending on the type of batteries using. Recommend to use alkaline batteries.
- By using brand new alkaline batteries, device can stay around 7 days with around 30 min. usage per day.
- Clock accuracy: 10 seconds per day.

INQUIRIES ABOUT TAMAGOTCHI PIX SERIES PRODUCTS

Bandai Customer Support Center Bandai Namco Toys & Collectibles America Inc. 23 Odyssey, Irvine, CA 92618
Open Monday – Friday 10:00am to 5:00pm (excluding national holidays, and summer and winter holidays) Or send inquiry email to Customer Service on www.bandai.com
*For US customer only.

MADE IN CHINA
Manufactured for Bandai Namco Toys & Collectibles America Inc. 23 Odyssey, Irvine, CA 92618
Actual size, color, style and decoration may vary. Bandai logo: © and © 2022 BANDAI. TAMAGOTCHI and all related logos, names and distinctive likenesses are the exclusive property of Bandai. © BANDAI All Rights Reserved.

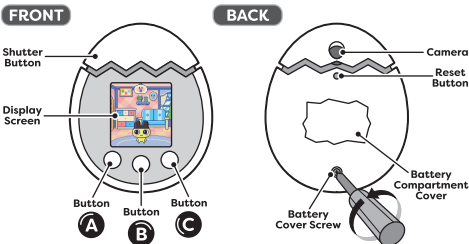
DISCLAIMER

⚠️WARNING: Changes or modifications to this unit not expressly approved by the party responsible for compliance could void the user's authority to operate the equipment. **NOTE:** This equipment has been tested and found to comply with the limits for a Class B digital device, pursuant to Part 15 of the FCC Rules. These limits are designed to provide reasonable protection against harmful interference in a residential installation. This equipment generates uses and can radiate radio frequency energy and, if not installed and used in accordance with the instructions, may cause harmful interference to radio communications. However, there is no guarantee that interference will not occur in a particular installation. If this equipment does cause harmful interference to radio or television reception, which can be determined by turning the equipment off and on, the user is encouraged to try to correct the interference by one of more of the following measures- Reorient or relocate the receiving antenna. Increase the separation between the equipment and receiver. Connect the equipment into an outlet on a circuit different from that to which the receiver is connected. Consult the dealer or an experienced radio TV/technician for help. This device complies with Part 15 of the FCC Rules. Operation is subject to the following two conditions: (1) this device may not cause harmful interference, and (2) this device must accept any interference received, including interference that may cause undesired operation. CAN ICES-3 (B)/NMB-3(B).



Do not place in water or operate with wet hands. This may cause the product to break. Avoid use or storage in high humidity.

THE PRODUCT



BASIC OPERATION

Tap A Go to next page or selection.	Tap B Confirm/Advance dialogue.	Tap C Cancel/Back.	Shutter Button Wake/CAMERA/Screenshot (Screenshot is only available when the Camera icon is displayed in the bottom left corner of the screen.)
Right Swipe A B C Swipe A > B > C quickly: Switch HOME SCREEN or switch page in menu.	Left Swipe A B C Swipe C > B > A quickly: Switch HOME SCREEN or switch page in menu.	3-Button Tap A B C Tap A, B, and C at once: Heal illness and cavities/Put to bed.	Shutter Button (Hold) OUTSIDE menu opens. *Cannot be used while Tamagotchi Character is an EGG.

ENTERING TIME AND BIRTHDAY

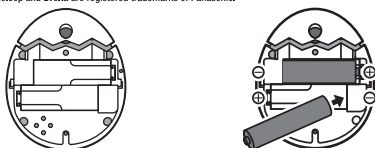
Tap A Scroll to next number.	Tap B Confirm/ Move to next box.	Tap twice C Return to previous selection.	Tap A while holding C Scroll to previous number.
--	--	---	---

THE BIRTH OF TAMAGOTCHI CHARACTER!

Follow the steps below to play with TAMAGOTCHI PIX PARTY.

INSERT BATTERIES

*Alkaline batteries recommended. Adult assembly required.
*For rechargeable batteries, please use eneloop or rechargeable-type Evolta batteries only.
*Compatible with all eneloop and rechargeable-type Evolta models. (Pro, Standard, and Life).
*eneloop and Evolta are registered trademarks of Panasonic.



- After turning the screw on the back counter-clockwise, slide the battery compartment cover to open.
- Correctly insert the 2 AAA (1.5V) batteries, matching the + and - signs. Close the battery compartment cover. Properly closing the cover will push the Reset Button. After the sound, the language settings will be displayed. If no sound plays, press the Reset Button with a narrowly pointed object.

VARIOUS SETTINGS AND THE BIRTH OF TAMAGOTCHI CHARACTER

LANGUAGE SETTINGS [DEUTSCH ENGLISH ESPANOL FRANCAIS]	SETTING THE CLOCK [11:59 am 12:00:00]	ENTERING YOUR NICKNAME [NAME]	ENTERING YOUR BIRTHDAY [MEN'S YOUR BIRTHDAY 11/23]	ATTRIBUTE QUIZ [FAVORITE FOOD?]	THE BIRTH OF TAMAGOTCHI CHARACTER [EGG]
---	--	----------------------------------	---	------------------------------------	--

After selecting a language, completing setup, and taking the ATTRIBUTE QUIZ, an EGG will appear in the room. Your Tamagotchi Character will be born after about a minute!

ATTRIBUTE QUIZ

When you first activate your TAMAGOTCHI PIX PARTY, or when a character dies and you receive a new EGG, the EGG you receive will change depending on your picture and your answers to the questions!



- Line up the frame and have someone take a picture of you. Once you have a picture you want, select YES when prompted with REALLY SURE? If you want to redo the picture, select NO.

ENTERING LETTERS

- Move the cursor and select the box to enter a letter in. (The cursor will blink until a selection is made.)
Tap **A** Move cursor to next box. Tap **B** Select. Tap **C** Move cursor to previous box.
- Select the row with the letter you want. *The menu is displayed in the following order: letters > symbols > smileys > numbers.
Tap **A** Scroll to next row. Tap **B** Select row.
- Move the cursor and select the letter/icon.
Tap **A** Scroll to the next letter. Tap **B** Select letter.
- Select Yes on the confirmation screen to finish typing. There are two ways to get to the confirmation screen.
- Move cursor to the last box and tap A Button.
- Select a letter for the last box and tap B Button.

Confirmation Screen

ABOUT ENERGY-SAVING MODE

If no button is pressed/tapped for around 30 seconds, the screen will turn off and go into energy-saving mode. Press the Shutter Button for play mode.

TAMAGOTCHI CHARACTER'S GROWTH

As it grows, your Tamagotchi Character's appearance and characteristics will change according to how you take care of it! The time it goes to sleep depends on the stage of the Tamagotchi Character. Keep an eye on it!

STAGES



*Once it becomes a CHILD, you can earn GOTCHI POINTS based on its progress.
*A BABY'S appearance (color) will vary depending on the EGG's attributes.
*After approximately seven days, Tamagotchi character will return to Planet Tamagotchi. (It is also possible to keep and raise them forever.)

THE SCREEN

LIVING ROOM (HOME SCREEN)	CARE ICON SCREEN		
Tap A	Tap A		
STATUS			
From the HOME SCREEN, you can look at the Care icon screen or go out to the GARDEN. - Tap C Button on the HOME SCREEN. Your character may do something! - Tap B Button on the HOME SCREEN to enter PETTING MODE.			
LIVING ROOM (HOME SCREEN)	GARDEN HOME SCREEN	CHARACTER ROOM	CLOCK SCREEN
Swipe Left/Right	Swipe Left/Right	Swipe Left/Right	Swipe Left/Right
A B C	A B C	A B C	A B C
Lots of events happen here!	You can play mini games in the CHARACTER ROOM. (P.14)		

CARING FOR YOUR TAMAGOTCHI CHARACTER

Use different Care icons to look after your Tamagotchi Character! Tap A Button on HOME, GARDEN or CHARACTER ROOM Screens to open the Care Icon Screen.

Care icon	Directional arrows	Tap A Scroll through Care icons.	Tap B Select.	Tap C Return to previous screen.	Swipe Left/Right	Turn page.
-----------	--------------------	---	----------------------	---	------------------	------------

CARE ICON	ICON NAME	CARE ICON	ICON NAME
	STATUS		CAMERA
	FEED		PHONE
	PARTY		CONNECT
	BATHROOM		MEDICINE
	ITEM BOX		NOTEBOOK
	GO OUT		SETTINGS

ABOUT THE CALL SIGN

The Call Sign will flash in the top right corner when your character needs something. Select the correct Care icon to make it happy!



STATUS

First, select the category you want to see, then confirm.

TAMA STATUS

CHARACTER STATUS (1)

HAPPY Shows Tamagotchi's Mood.

FRIENDSHIP Shows how close you and your character are.

GOTCHI POINTS Money on Tamagotchi Planet (Maximum: 99,999 points).

HUNGER Shows Hunger Level.

Find out the current status of your Tamagotchi Character. Check often to see how to care for it!

Tap **A** Switch displays.

CHARACTER STATUS (2)

Your nickname
Tamagotchi character's name
Generations
Age
Gender
Male Female

When you part with your character and a new ECO appears, a new generation will be added.

Increases by one per day.

PROFILE

Your Profile is displayed here!

Your nickname
Your birthday

Tap **A** → Tap **B** → CHANGE GREETING? YES/NO

*If you tap the A Button, the Greeting screen will be displayed.
*If you tap the B Button on the Greeting screen, a change Greeting confirmation screen will be displayed.

CHANGE GREETING

You can edit the Greeting that appears on your Profile. It will be sent to friends when you do the following activities:

- CONNECT > PLAYDATE > VISIT (P.11)
- CONNECT > GIFTS > GIVE > ITEMS / PROFILE (P.12)
- CONNECT > MEET UP > SEND MAIL (P.12)

FEED

Don't forget to give your Tamagotchi Character a FOOD or SNACK when the HUNGER or HAPPY level drops!

- Select the place you want to go to, then confirm.
- Select the food you want to give your Tamagotchi. It has likes and dislikes, so try different kinds of food!

FRIDGE

Number owned: COCONUT MILK

Item category: FOOD: SNACK: 300

You can give your character food that is in the FRIDGE.

Increases HUNGER level
Increases HAPPY level

RESTAURANT

Special category: HAMBURGER 700

You can use GOTCHI POINTS here to feed your character. The SPECIAL changes depending on the time and the day of the week. The DAILY SPECIAL changes each day.

Discount display: Only when a discount is available.

COOK

Take two pictures with your Camera to create FOODS and SNACKS!

1: Take two pictures with your Camera and put them in the pot. You will get a 5-color dish based on the colors in each picture.

2: Once you swipe to stir the pot, your FOOD or SNACK will be ready! Different color combinations will create new FOODS and SNACKS. You can eat the food right away or put it in the FRIDGE.

Swipe Left/Right Stir the pot.

PARTY

Invite a total of 4 guests to the party! There you can enjoy COOK, PHOTO, BINGO, GIFT GAME, and DJ PLAY!

*Even though your friend's device is a TAMAGOTCHI PKX (and not a TAMAGOTCHI PKX PARTY device), you can still invite your TAMAGOTCHI PKX friends to the PARTY by reading your friend's TAMAGOTCHI PKX TAMA CODE under the PLAYDATE menu.

INVITE

CONNECT TO INVITE? YES/NO

On the "CONNECT TO INVITE?" screen, select YES on the "CONNECT TO INVITE?" screen and scan the TAMA CODE to invite your friends.

INVITE

PICK GUESTS FROM LIST

On the "PICK GUESTS FROM LIST" screen, select a character to invite from your TAMA friends in the TAMA LIST. YOU PICK: You select a TAMA friend from the TAMA LIST. RANDOM: TAMA friends are randomly selected from the TAMA LIST.

COOK

COOK and **PHOTO** are always available, but **BINGO**, **GIFT GAME**, and **DJ PLAY** rotate.

DAILY SPECIAL

ATTEND

When you choose ATTEND to join a PARTY, the TAMA CODE will appear. Scan the TAMA CODE on your friend's device to join their party.

THE PARTY MENU

COOK

It's the same as the other COOK, so check there for more information! (P.05)

PHOTO

OUTSIDE Take a commemorative photo with the characters at the party. Choose whether to take your photo OUTSIDE or INSIDE.

INSIDE Select decorations by pressing the A button or swiping. B button confirms your selection, and the shutter button takes the picture.

BINGO

After a prize appears, the bingo card screen will display next.

Swipe to spin the bingo machine. You can win prizes when you get bingo in one row either vertically, horizontally, or diagonally.

GIFT GAME

Select what you want to gift (ITEMS, ACCESSORIES, FURNITURE). If you have nothing to gift, you cannot participate in the GIFT GAME. Remember: you lose any items you gift.

GIFT GAME

When the present rises on the screen and the clouds appear, swipe in time with the music! When the music stops, you'll get a present!

Swipe Left/Right to give.

DJ PLAY

Excitement Gauge

Arrow Icon

Swipe Right
A B C
A right arrow means swipe right.

Swipe Left
A B C
A left arrow means swipe left.

BATHROOM

Take your character here if it poops or is dirty! You can also clean the room!

- Select the place you want to take it to, then confirm.

TOILET

If your character needs to poop and is restless, take it to the Toilet! If your character has pooped on the HOME SCREEN, make sure to clean it up.

Swipe Left
A B C
Flush poop.

BATH

Give your character a bath and make it clean!

Tap B Wash character.

CLEAN

Clean the room! Swipe Left/Right

A B C Clean

BEDTIME AND DREAMS

Your character will yawn when it is sleepy. If you put it to bed, it will wake up refreshed the next morning. Your Tamagotchi Character's bedtime is between 8 p.m. and 10 p.m.

*Depends on the character.

When your character yawns, put it to bed.

Tap all 3 buttons together A B C Put to bed.

If you do a 3-Button Tap while your character is sleeping, you can see its dreams!

Tap all 3 buttons together A B C View dreams.

ITEM BOX

The items you've acquired are saved here!

- You can use the same item many times and you won't lose it. But you'll lose any that you give away. (Some items can't be transferred.)
- Your character can have up to 3 of the same ITEM.
- You can only have one of each SPECIAL ITEM.
- You can save up to 20 different ITEMS, FURNITURES and ACCESSORIES.

ITEM BOX

First, select a category, then confirm.

Uses Left (Maximum: 3)

ITEMS/SPECIAL

PARTY POPPER

You can see what items you own. If you want to use one, tap B button and select an item. When the confirmation screen asks PLAY? select YES!

ACCESSORY

STAR WAND

You can put an ACCESSORY on your character! Select which one you want, then confirm. To take an ACCESSORY off, select REMOVE! Tamagotchi Characters can only wear accessories as an ADULT and only one at a time.

FURNITURE

PUT LEFT **PUT RIGHT**

You can have one piece of FURNITURE on either side of your Living Room. Select the FURNITURE you want and confirm. Select PUT AWAY if you want to put FURNITURE away.

DÉCOR

Select what you are shopping for, then confirm.

COLOR

Select this and take a picture with the Camera, and the color of the picture will be added to a palette.

*Colors may vary depending on the quality of the photo.
*You cannot save pictures you take in this menu to your ALBUM.

Catalog **Color icon**

Swipe Left/Right A B C Add color.

DÉCOR

- 1: Select this to apply color you added to your color palette to items in your Catalog.
- 2: Pick a favorite item from your Catalog, select the palette color you want to use, and swipe left and right to paint!
- 3: Once you're finished, you can add it to your ITEM BOX.

GO OUT

First, select the area you want to go to, then confirm.

PLACES TO GO

EXPLORE: Your character can explore the outside world with the Camera function. TAMA STORE: Go shopping with GOTCHI POINTS.

ARCADE: Play games to earn GOTCHI POINTS!

PARK: Different events will happen there! (P.09)

PHOTOS: Take pictures with your character! (P.09)

EXPLORE

- 1: The Camera will activate when you go out with your character.
- 2: If you swipe left or right while waiting for TAMA friends, your character will move.
- 3: TAMA friends will soon appear! You'll probably see different ones on the Camera whenever you go out!

TAMA STORE

You need GOTCHI POINTS (money on Planet Tamagotchi) at places with this symbol.

ROOM OCEAN 15000
You can change your Living Room wallpaper.

ITEM SNORKEL SET 9000
There are lots of tools here! Some are only available for a limited time.

ACCESSORY CLASHHELL HAT 10000
There are lots of fashionable Accessories! Some are only available for a limited time.

PRIZE DRAW

Swipe Guide

The PRIZE DRAW occurs once per day. Swipe when you see the Guide appear on the screen. You'll probably win GOTCHI POINTS and items!

- Discount: If you have an ECO BAG, REMODEL COUPON, or FASHION COUPON, you can go shopping at a discount price.

ARCADE

COFFEE CUP

Select the game you want to play, then confirm. The games you can play will change depending on the day of the month. For details on how to play, see (P.08-P.09).

*The number of GOTCHI POINTS earned depends on the results of each game.
*Cancel a game by tapping A and C simultaneously.

HOW TO PLAY MINI GAMES

COFFEE CUP (LEISURE)

Hearts

Swipe in the same direction to spin the coffee cup! If you go too fast, your character will get dizzy. However, its HAPPY level will drop if you're too slow. Spin at the perfect speed to make your character feel happy. Hearts will also appear if you spin at the right speed! Collect 5 hearts to win the game.

Swipe Left A B C Spin the coffee cup.

BALLOONS (LEISURE)



Use the A, B, and C Buttons to pop balloons. Wait until your character is directly underneath one so it can catch what's inside. A special balloon with a different color filled with GOTCHI POINTS might even appear.

Tap
A B C
Pop Balloon.

FRUIT FALL (NATURE)



Use the A, B, and C Buttons to pick the fruit that your character wants. Catch a caterpillar and it's game over!

Tap
A B C
Pick fruit.



ROCKET (NATURE)



Energy Meter Obstacles Repeatedly tap A, B, or C Button to energize the rocket. Once it launches, steer it and avoid obstacles by swiping left and right! Hitting objects will decrease your power.

Tap
A B C
Charge

Swipe Right
A B C
Move Right.

Swipe Left
A B C
Move Left.

PING-PONG (SPORTS)



Rally with your character! When the ball is in front of you, swipe left or right to return it. If your character is on the left, swipe from right to left. If your character is on the right, swipe from left to right. The game is over when you fail to return the ball or send it to the opposite side of your character.

Right Swipe
A B C
Hit the ball right.

Left Swipe
A B C
Hit the ball left.

FOOTBALL (SPORTS)



Tap either A, B, or C Button to pass the ball for your character to shoot. The goalie will move up and down, so tap the button at the right moment to score. Each ball the goalie catches stops a goal. You have five chances! How many goals can you score?

Tap
A B C
Pass

PARK

What kind of events are going on?

PHOTOS

*You can't play until your Tamagotchi Character is an ADULT.



First, select where you want to take a picture, then confirm.

OUTDOOR

The Camera will open.

STUDIO



Swipe to move. Tap the B Button to zoom.

- 1: Tap A Button to select the room you wish to use for your photoshoot and choose with B Button. You can also swipe to view room options.
- 2: Once your photoshoot is ready, swipe left or right to move your character. Tap B to zoom in on it, and tap B again to return your character to its original position. Press the Shutter Button to take the picture.
- 3: When asked, IS THIS OKAY? select YES to save the picture. If you wish to retake it, select TAKE AGAIN. Your pictures will be saved to your ALBUM.

CAMERA

Select an option, then confirm.

- TAKE PHOTO: You can take pictures inside and outside of character's room.
- ALBUM: You can save pictures to view or edit later.

TAKE PHOTO



OUTSIDE: The Camera will open when you select this, and you can take pictures with the Shutter Button on the HOME SCREEN.

INSIDE: You can take pictures in one of your CHARACTER'S ROOMS. Swipe to choose a room and press the Shutter Button to take a picture.

ALBUM

Number of current picture/
Total Number in Album



Album Folder



Indicates next picture

ALBUM FOLDER: Select this to see your saved pictures. You can flip through them by either tapping A or swiping left or right. Tapping B opens the ALBUM menu.

ALBUM MENU

EDIT



- 1 FILTERS: When you tap the A Button, you can switch between four different filters.
- 2 STICKERS: Select stickers from the Stickers screen. While your picture is displayed, tap A Button to move them into place and tap B to confirm.
- 3 REMOVE: Tap A Button to select the sticker you want to remove and tap B to confirm. The selected sticker will blink.
- 4 DONE: SAVE CHANGES? When this is prompted, select YES to save your decorated picture.

UPLOAD

ALBUM: Pictures from your Album can be posted on SOCIAL. Please see PHONE for more information.

DELETE

If you want to delete a currently selected picture, choose DELETE. When prompted with ARE YOU SURE? please answer YES.

PHONE

*You can't play until your Tamagotchi Character is a CHILD.

First, choose what you want to do, then confirm.

SOCIAL

ALBUM: Post pictures saved in your ALBUM onto SOCIAL. If you do, you might get Likes from characters!



- SOCIAL:
- 1: Tap the B Button on the SOCIAL screen to open the ALBUM.
 - 2: Then pick a picture you like from the ALBUM.
 - 3: Choose the positioning of the image crop.
 - 4: Once you give it a title, you can post it. For more information see (P.04).

FOOD

Order a FOOD or a SNACK of your choice, and after a while NAZOTCHI will bring it to you. Once the FOOD or SNACK has arrived, you can feed it to your Tamagotchi Character.



E-SHOP



Select the item you want to order, and after a while NAZOTCHI will bring it to the Living Room. Once it arrives, it will be stored in the ITEM BOX for you to retrieve.

AMBULANCE



GRIM GOTCHI

GRIM GOTCHI: If the GRIM GOTCHI appears, select AMBULANCE in the PHONE menu. Your character might be saved if it's brought to the hospital.

09

SITTER



You can spend 100 GOTCHI POINTS to call a SITTER. While the SITTER is watching your character, the HUNGER and HAPPY meters will not deplete.



If you tap A or B Button before 7 p.m., you can choose to send the SITTER away. After 7 p.m., the SITTER will automatically leave, and your Tamagotchi's HAPPY meter will fall. You can call a SITTER from 7:00 a.m. to 6:55 p.m. You cannot call a SITTER if the HUNGER or HAPPY meters are at zero.

CONNECT

TAMAGOTCHI PIX PARTY and TAMAGOTCHI PIX can connect. First, choose what kind of connection you want to perform, then confirm.

TYPES OF CONNECTIONS

PLAYDATE: Play with friend's character!

GIFTS: Exchange items with friends!

DOWNLOAD: Download a variety of items! (P.12)

MEET UP: Set a meet up to play with friend's Tamagotchi Character! (P.12)

WHEN SENDING



Select the device you want to connect with. For TAMAGOTCHI PIX PARTY devices select PIX PARTY, and for TAMAGOTCHI PIX devices select PIX. A personalized TAMA CODE will appear.



A TAMA CODE will be displayed on the screen. Read this TAMA CODE with the receiving TAMAGOTCHI PIX PARTY or TAMAGOTCHI PIX device. Tap A or B Button while the TAMA CODE is displayed to activate the Confirmation screen. Once the code has been read, select YES.

WARNING!

*If the screen is too dark, it will be hard to read the displayed TAMA CODE. Change the BRIGHTNESS in the SETTINGS.

WHEN RECEIVING

In TAMAGOTCHI PIX PARTY, both TAMA CODE in PARTY PIX and TAMA CODE in PIX can be scanned.



Read the TAMA CODE displayed on the sender's screen using the Camera of your TAMAGOTCHI PIX or TAMAGOTCHI PIX PARTY device. Once the code is successfully read, your friend's Tamagotchi character will come to play or you can receive an item.

WARNING!

*Make sure the TAMA CODE fits within the guide box.

PLAYDATE

*You can't play until your Tamagotchi character is a CHILD.



- Choose one first.
- VISIT: Go to play on a friend's TAMAGOTCHI PIX PARTY or TAMAGOTCHI PIX device.
 - INVITE: Have a friend's character come to play.



- Next, select your friend's device.
- *Be aware of the following when connecting with PIX.
 - PIX cannot be selected when raising MilkTchi or Wawatchi.
 - Even though you have raised MilkTchi and Wawatchi, they will not appear on TAMAGOTCHI PIX's friend's profile.
 - When you VISIT to TAMAGOTCHI PIX device, accessories with the PARTY MARK will not appear in TAMAGOTCHI PIX.

VISIT



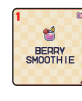
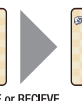
- 1: The TAMA CODE will be displayed on the screen.
- 2: Once the other person successfully reads the code, your character will go to your friend's place to play. When you are done playing, tap the A, B, and C Buttons simultaneously, then select YES when the GO HOME? prompt appears.

INVITE



- 1: The screen will switch to Camera mode.
- 2: Read the TAMA CODE of the friend you want to come play.
- 3: Once the code is successfully read, your friend's Tamagotchi character will come to play. The menu will appear to press A button. And choose what you'd like to do.
 - COOK: Make food with friend's Tamagotchi character.
 - EXPLORE: Go on an outing with friend's Tamagotchi character.
 - GO HOME: Have friend's Tamagotchi character go home.

GIFTS



- 1: Select GIVE or RECEIVE.
- 2: Select your friend's device.
- 3: Select the item you want to gift.

*PIX friends cannot be selected when raising MilkTchi or Wawatchi.

GIVE > ITEMS



After deciding on the type of item you want to send, select the item and a TAMA CODE will be displayed on the screen.

*When you are with a PIX friend, items with the PARTY MARK cannot be gifted.

RECEIVE > ITEMS

The Camera will be activated. Read the TAMA CODE of the friend who's sending you an item. Once the code is successfully read, you can receive the item.

Tradable Items:

- FRIDGE items. (You cannot trade BAGELS, LOLLIPOP, MILK, or COOKIE.)
- ITEM BOX Toys. (You cannot trade BUILDING BLOCKS, RATTLE, or DECOR Items.)
- FURNITURE and ACCESSORIES. (You cannot trade FURNITURE, ACCESSORIES, or DECOR Items that are in use.)
- Room Wallpaper. (Only those obtained with CONNECT > DOWNLOAD)

*All items, except for ROOM Wallpaper, will disappear from your ITEM BOX once they are sent.

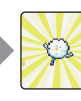
GIVE > PROFILE

The TAMA CODE will be displayed on the screen.

RECEIVE > PROFILE

Read the TAMA CODE of the friend who's sending their profile. Once the code is successfully read, you can receive the profile.

DOWNLOAD



If you find a TAMA CODE, try reading it. You can download things like MEALS, SNACKS, ITEMS, or ACCESSORIES!

- Where Downloads are Stored:
- MEALS, SNACKS: FRIDGE
 - ITEMS: ITEM BOX > ITEMS
 - ACCESSORY: ITEM BOX > ACCESSORY
 - FURNITURE: ITEM BOX > FURNITURE
 - ROOM Wallpaper: TAMA STORE > ROOM

*GOTCHI POINTS are required to change the ROOM Wallpaper.

MEET UP

*You can't play until your Tamagotchi character is an ADULT.

- Choose one first.
- SEND MAIL: Write an invitation MAIL and send it to your friend.
 - GET MAIL: Receive an invitation MAIL.



- Next, select your friend's device.
- *Be aware of the following when connecting with PIX.
 - PIX cannot be selected when raising MilkTchi or Wawatchi.
 - Even though you have raised MilkTchi and Wawatchi, they will not appear on TAMAGOTCHI PIX's friend's profile.
 - When you VISIT to TAMAGOTCHI PIX device, accessories with the PARTY MARK will not appear in TAMAGOTCHI PIX.

SEND MAIL



- 1: Choose who you want to send the invitation MAIL to, or select ANYONE.
- 2: Choose the time for the meet up.
- 3: You can bring MEALS or SNACKS with you as a gift. Choose what you want to bring from your FRIDGE. If you're not bringing a gift, select DO NOT CHOOSE.

*You will no longer possess the items given as gifts.



- 4: Once you select YES in response to the prompt IS THIS OKAY?, a TAMA CODE will be displayed.
- 5: When it's time for the meet up, an alarm will sound and your character will automatically go to play.

*Your character will automatically return after ten minutes have passed.

10

11

12



- Once the Camera is activated, read the TAMA CODE of the friend.
- Once the code is successfully read, you can receive the MAIL.
- When it's time for the meet up, tap the B Button when the alarm sounds. Your friend's Tamagotchi Character will come over to play.
*If you do not tap the B Button within five minutes of the arranged meet up time, the meet up will be canceled.

DURING A MEET UP

Meet Up Symbol

A Meet Up symbol will be displayed in the Living Room. You cannot call a SITTER on the day of a meet up.



MEDICINE

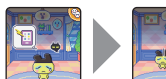
Tamagotchi Cold



If your character gets sick, hurry and make it better! If your character looks like the ones in the pictures to the left, hurry and make it better with MEDICINE! Select MEDICINE or tap the A, B, and C Buttons simultaneously to use MEDICINE.
*Sometimes it will not get better with only one dose.

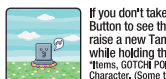
Tap all 3 buttons together
A B C
MEDICINE

MY CHARACTER LOOKS LIKE IT'S GOING TO DIE!



If you let your character stay sick or don't take good care of it, the GRIM GOTCHI will appear. If you see the GRIM GOTCHI, hurry and select AMBULANCE from the PHONE menu to save your character!

IF YOUR TAMAGOTCHI CHARACTER DIES...



If you don't take good care of your Tamagotchi Character, it will die. Tap A Button to see the profile of the character that has passed away. If you want to raise a new Tamagotchi Character after one has passed away, tap A Button while holding the C Button to start over from the beginning.
*Items, GOTCHI POINTS, and pictures will be carried over with the new Tamagotchi Character. (Some things will not carry over.)

NOTEBOOK

This is where you can see a variety of information and read greetings! First, choose the information you want to see, then confirm.

MY TAMAS

You can save and look at the information of all the characters you have raised until this point.



TAMA LIST

Some of the Tamagotchi Characters you meet when you GO OUT will be saved here. You can look at the information of other characters you've met in these places. Tamagotchi Characters you haven't met yet will be displayed as a question mark.

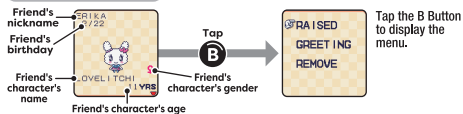
RECIPES

You can see the FOODS and SNACKS that you have eaten and made. FOODS and SNACKS that you haven't eaten or made yet will be displayed as a question mark.

ITEMS

You can see information on ITEMS, ACCESSORIES, FURNITURE, and SPECIAL ITEMS! Things that you do not have yet will be displayed as a question mark.

FRIENDS



CONNECT (P.11) records information of friends you've played with! You can save up to 20 entries in FRIENDS. After 20 entries, no new FRIENDS can be registered until you delete someone by selecting REMOVE.

RAISED



This shows characters that your friends have raised.

GREETING



This shows messages from friends.

REMOVE

To delete a friend from the FRIENDS list, select REMOVE on the REMOVE FROM FRIENDS? screen.

PARTY MENU

You can save and view information about FOOD or SNACKS created in COOK on the PARTY menu.



PETTING MODE

*You can't play until your Tamagotchi Character is an ADULT.

If you tap a button or swipe when your character comes up close, s/he'll react in cute ways! When your character is in the ADULT stage, tapping the B Button on the HOME SCREEN will make it come up to you.



Swipe or tap the buttons when it's up close, and you can play with your character!

*You can end PETTING MODE by holding down the C Button.

PETTING MODE

Tap A B C
Swipe Left/Right A B C

GARDEN

*You can't play until your Tamagotchi Character is a CHILD.

Swipe when on the HOME SCREEN to go out into the yard. You can grow fruit in the yard, and special events may happen when you're out there. You might even grow an Item or Food not usually grown on trees.



GROW FRUIT AND HARVEST THEM!

Your character can water the trees once a day when it goes to the GARDEN. Water them every day to help the fruit grow. When they get big, you can harvest them. Harvested fruit will be stored in the FRIDGE. You might even grow an Item or Food not usually grown on trees. If you grow an ITEM or ACCESSORY, it will be stored in the ITEM BOX. Fruit can be given to your character to eat or given to friends as gifts.
*If you do not water them every day, the fruit will not be edible and will not be stored.

LETTERS FROM FRIENDS MAY ARRIVE!

NAZOTCHI will bring letters from friends.

CHARACTER ROOM



When your character reaches the ADULT stage, it will start thinking about the future! You can encourage your character in its hobbies and performances through mini games.

- Starting at the TEENAGER stage, you can swipe on the HOME SCREEN to move outside your CHARACTER ROOM.
- When your character reaches the ADULT stage, it can enter the room.
- The room will change daily depending on your character and playstyle.
- When you go to your Tamagotchi's room, it may ask you for help.

ROOM MINI GAMES

COOKING ROOM



The cursor above the gauge will move left and right. Stop it with the A, B, or C Button! If it stops in the red area, you succeed. The game ends after three tries. When the result is EXCELLENT, any FOODS or SNACKS you have made will be stored in the FRIDGE.

Tap A B C
Stop the Gauge.

PERFORMANCE ROOM



Tap the A, B, or C Button within the time limit to make a heart appear. The more hearts you make, the higher the excitement gauge will rise. You can make hearts by tapping the A, B, and C Buttons simultaneously as well. Try different button combinations and cheer on your character!

Tap A B C
Raise the excitement gauge

CUSTOMIZATION ROOM



Present the customer with the item they want. You can choose between two colors and styles. Tap the icons your character is imagining with careful timing. When you select everything, the item will be completed. If the item matches what the customer wanted, you succeed.

Tap A B C
Stop the icons

SAYING GOODBYE

Make a Photo Album of Tamagotchi Character that is returning to Tamagotchi Planet!



- Once four days pass after a character has reached the ADULT stage, it will return to Tamagotchi Planet. You'll then prepare to say goodbye to your character.
- Create a Photo Album with your character and say goodbye. If you have less than three pictures saved in your Album, you cannot create a Photo Album and you cannot say goodbye to your character.

HOW TO CREATE A PHOTO ALBUM

ITEM BOX > DÉCOR (P.08)
Refer to this section to add color to your Album. Once you add a color to your Album, you can select three pictures to remember your time with Your character. Select REVIEW when prompted with ARE YOU SURE? to swipe between the selected pictures and check them. Select CONFIRM to create your Photo Album. Select GO BACK to choose pictures again.
3: Your character will take the Photo Album, return to Tamagotchi Planet, then choose the next EGG to send to you.

If you play a lot of mini games in your CHARACTER ROOM, Your character might become professional when you say goodbye.

*If FRIENDSHIP is level five or higher, you will be sent to a screen with the prompt MAKE PHOTO ALBUM? If you do not want to say goodbye, select NO. If you decide you do want to say goodbye after selecting NO, you can choose an ALBUM from ITEM BOX > DÉCOR (P.08)

SETTINGS

Choose what you want to change, then confirm.



TIME

Change the time. Make sure you choose the hour with the correct a.m./p.m.
*Rease see (P.03) for controls.



BRIGHTNESS

Change the brightness of the screen.



Tap A Darker
Tap B Lighter
Tap C Finish setting.

SOUND

Turn the sound ON and OFF.



REMARKS ABOUT CONNECTING WITH TAMAGOTCHI PIX

- *Be aware of the following when connecting with TAMAGOTCHI PIX.
 - Select the device you want to connect with. For TAMAGOTCHI PIX PARTY devices select PIX PARTY, and for TAMAGOTCHI PIX devices select PIX. A personalized TAMA CODE will appear.
 - TAMAGOTCHI PIX cannot be selected when raising Milkitchi or Wawatchi.
 - TAMAGOTCHI PIX friend's profiles will not show if they are raising Milkitchi or Wawatchi.
 - When you VISIT to TAMAGOTCHI PIX device, accessories with the PARTY MARK will not appear in TAMAGOTCHI PIX.
 - Items with the PARTY MARK cannot be gifted to TAMAGOTCHI PIX friends.
 - When you want to invite your TAMAGOTCHI PIX friends to the PARTY, scan the TAMA CODE via PLAY DATE > VISIT on TAMAGOTCHI PIX.

REPLACING BATTERIES



When the batteries run low, KANDENTCHI will let you know. If you see this screen, you will not be able to input anything. See The Birth of Tamagotchi Character! (P.03) and put in two new batteries.

CONTINUE can be chosen to once again take care of the Tamagotchi Character you were raising.

BE CAREFUL!

*If you select RESET ALL and confirm, all data will be erased and the game will reset to its default settings.
*No guarantees are made regarding deleted data.

If you continue to play for a long time and the batteries run low without KANDENTCHI'S Announcement screen appearing, you may experience the following malfunctions. If this happens, insert new batteries and refer to the Replacing Batteries guide above.

- The screen turns completely black or white.
- The sound gets very quiet.
- The screen flickers or other malfunctions occur.

TROUBLESHOOTING

CAN'T CONNECT WITH ANOTHER TAMAGOTCHI PIX PARTY OR TAMAGOTCHI PIX DEVICE

WHEN SENDING: If the screen is too dark, it will be hard to read the displayed TAMA CODE. Change the brightness on the SETTINGS screen.

WHEN RECEIVING: Make sure the TAMA CODE fits within the guide box.

- **The LCD screen is hard to see!**
Adjust the screen's brightness settings. (P.15)
 - **I can't hear any sound!**
Go to SOUND and check that it's set to ON. (P.15)
 - **The screen is completely black (or white), or there's no sound, and the buttons won't do anything!**
The batteries may be running low. (The batteries may run out without KANDENTCHI appearing.) Refer to Insert Batteries (P.03) and replace the batteries.
 - **My character won't wake up! Or it won't go to sleep!**
Your character will wake up or go to sleep on its own at scheduled times. Check to make sure your time is set correctly. (P.15) If a.m./p.m is incorrectly set, Your character's day and night cycle will be flipped.
 - **I tried to download an item, but it said, YOU HAVE TOO MANY ITEMS.**
You can only keep a certain amount of items. If you delete items from the various storage areas and free up room, you can download new items. (P.07)
- *Be aware of the following when connecting with PIX.
- PIX cannot be selected when raising Milkitchi or Wawatchi.
- Even though you have raised Milkitchi and Wawatchi, they will not appear on TAMAGOTCHI PIX's friend's profile.
- When you VISIT to TAMAGOTCHI PIX device, accessories with the PARTY MARK will not appear in TAMAGOTCHI PIX.

RESET BUTTON

The system received a strong shock or something else happened to it and now nothing works or the screen is not displaying correctly. Press the Reset Button.
*If the screen will not display anything even after pressing the Reset Button, try taking out the batteries and putting them in again.

THE CONTINUE/RESET ALL SCREEN



When you press the Reset Button, you will see a screen with the options CONTINUE or RESET ALL.
*When the battery compartment is opened or closed, the Reset Button will automatically be pushed, and you will see a screen with the options CONTINUE or RESET ALL.

- If you want to continue raising your current character, select CONTINUE and confirm. After you return to the HOME SCREEN, adjust the current date and time by going to TIME in SETTINGS.
- If you want to raise a new character, select RESET ALL and confirm. After that, you will select your language settings, set the clock, enter a nickname and birthday, and take the ATTRIBUTE QUIZ, and then a new EGG will appear. The EGG will hatch after a little while.

BE CAREFUL!

*If you select RESET ALL and confirm, all data including your NOTEBOOK, ITEM BOX, TAMA LIST, GREETING, GOTCHI POINTS, and Album pictures will be erased and the game will return to its default settings.

PERSONAL DATA

- As part of customer service management, the company Bandai UK Ltd. may need to access the personal data of users when they return a TAMAGOTCHI PIX under warranty.
- The customer service department will have access to the user's identifying data to process the exchange request, including the user's first and last names, postal address, telephone number and e-mail address.
- In accordance with the regulations on the protection of personal data, you have the right to access, rectify and delete such data. You also have a right to limit the processing and a right to the portability of the data. These rights can be exercised by e-mail at the following address: mydata@bandai.co.uk In the event of a complaint, you can refer the matter to the Information Commissioners Office (ICO, UK) or the Data Protection Commission (DPC, Ireland). For more comprehensive information on your rights, Bandai UK Ltd. invites you to consult its data protection policy: <https://www.bandai.co.uk/privacy-policy>.
- With regard to the data stored in the defective TAMAGOTCHI PIX device, the user must delete it before sending it to the company Bandai UK Ltd. If the user does not delete this data, it will be deleted by the company when the TAMAGOTCHI PIX is destroyed.

*For european customer only.